

VANSE



Shandong Vanse Machinery Technology Co.,Ltd.
Address : No.88,Chuangye Rd.,Yanzhou Economic Development Zone, Jining city, Shandong Province, China

Email : info@vanse.cc
Website : www.vansecm.com

Shandong Vanse Machinery Technology Co., Ltd.

BRIEF INTRODUCTION

***Vanse Machinery
Serve the World***



Company Profile

Shandong Vanse Group, founded in 2013, has leveraged the rapid growth of the construction machinery industry by pursuing a high-end, high-quality, and efficient development path. It has evolved into a national high-tech enterprise specializing in research, development, manufacturing, sales, and after-sales services for construction machinery equipment.

Vanse Group boasts a strong R&D team focused on producing and innovating telehandler, backhoe loaders, skid-steer loaders, aerial work platforms, and forklifts. The group remains dedicated to future-oriented development and the pursuit of creating a better life for humanity. The group comprises divisions like Vanse Machinery, Wanhui New Energy, Wanli Precision Machinery, Vanse Road and Bridge Machinery, and Vanse Machinery (SEA). Our products are not only present in the Chinese market but have also been exported to over 40 countries and regions, including the USA, Mexico, the UK, Spain, Germany, Russia, Malaysia, Australia, and Saudi Arabia.

Grasp the present, realize the future development, Vanse will create a brilliant future together with you!

Vanse Telehandlers

Vanse telehandlers have a wide reach and high lifting height, with a maximum lifting height of up to 17.6 meters, making them a versatile and efficient piece of engineering machinery. Equipped with strong traction and 4-wheel drive, they offer three steering modes: front axle steering, front and rear axle steering and crab steering. These excellent configurations enable effortless maneuvering with loads in tight spaces and on rough terrain. Our telehandlers allow you to achieve maximum rated capacity at the highest lifting height and extend your reach over fences, walls, landscaping, and other obstacles. Prioritizing operator safety and comfort, our telehandlers feature advanced safety functions, intuitive controls, and a design that emphasizes stability and precision. The sturdy and reliable structure of Vanse telehandlers, along with easily interchangeable attachments, ensures they can quickly, accurately, and reliably complete various tasks in working conditions such as construction, agriculture, municipal maintenance, ports and terminals, warehouses, and logistics centers.

1

A variety of attachments are available

Vanse telehandlers have a maximum rated load of four tons and can be equipped with a variety of attachments to meet various complex conditions. For example: clamps, grabbers, forks, buckets, snowplows, hooks, simple platforms, etc. Attachments replace easily, widely used in logistics, construction, manufacturing, boosting efficiency.

2

The telescopic arm is sturdy and durable

The Vanse telehandler can have up to four telescopic arms, with the WSC1840 lifting to 17.6 meters. It offers excellent reach and stability. Adjustable arms allow precise control for various cargo tasks. The arm system ensures stability and safety, providing excellent control during heavy-load or high-speed operations.

3

ROPS & FOPS cab

The Vanse telehandler's ergonomic cab features ROPS & FOPS for rollover and falling object protection, enhancing safety in harsh environments. Equipped with a negative pressure air circulation system and efficient HVAC, it reduces driver fatigue and ensures comfort. The cab's design offers all-round visibility, minimizing visual obstruction and enhancing driver safety during operation.

4

The body can be tilted or leveled

The body design of the telehandler is highly flexible and adaptable, capable of easily tilting or leveling according to various operational needs and scenarios thereby ensuring stable operational performance in complex working environments, enhancing work efficiency and safety.

5

Hydraulic support legs

Hydraulic support legs on telehandlers boost performance by providing stable support, enhancing carrying capacity, and ensuring balance. Their adjustable height and telescoping adapt to various terrains, accelerating work processes and reducing risks, while safeguarding operator safety.

6

Italian Carraro drive axle

The Italian Carraro Bridge with a torque sensor ensures precise control and stability. The Vanse telehandler's transmission excels in high-speed, heat resistance, and self-cooling. Proven technology makes Carraro more reliable, especially in extreme climates, with global support for easy maintenance.



VANSE TELEHANDLER

WSC1840 | WSC1440 | WSC735 | WSC625



WSC1840

LIFTING HEIGHT: 17.6M
LOADING CAPACITY: 4000KG

WSC1440

LIFTING HEIGHT: 13.5M
LOADING CAPACITY: 4000KG

WSC735

LIFTING HEIGHT: 7M
LOADING CAPACITY: 3500KG

WSC625

LIFTING HEIGHT: 5.8M
LOADING CAPACITY: 2500KG

Revolutionary Speed

The load-sensitive post-valve compensation technology dynamically adjusts flow, ensuring ample supply based on load. This boosts operating speed by 15%, slashing cycles and enhancing overall efficiency.

Parallel Prowess

Optimized for seamless multitasking, the system smoothly executes lifting, rotating, and telescoping simultaneously. It maintains efficiency even in challenging conditions, minimizing downtime.

Safety

Wide field of view and clear instrument display allow the driver to accurately grasp the status of the equipment and ensure safe and worry-free operation.

Comfortability

The cockpit adopts ergonomic design to ensure that the driver can maintain comfort during long-term operation. The optimized control layout makes various operations within reach, greatly improving the convenience of operation.

Versatility

The equipment also supports the quick replacement of different attachments, such as buckets, forks, platforms, etc. and with the corresponding professional operation mode, the equipment can instantly transform into a powerful tool that meets a variety of operating needs.

Flexibility

Vanse telehandler provides three steering modes to adapt to the needs of different operating scenarios. Whether it is flexible operation in a narrow space or rapid movement in an open area, it can be easily handled.

Intelligent Adaptability

Harnessing post-valve compensation, the system auto-adjusts to optimal performance across varying loads, ensuring stability and efficiency. Its smart design simplifies operation and fortifies equipment reliability and longevity.

Customized Performance

Tailored speed and pressure modes cater to different attachments switching buckets triggers max flow and pressure for enhanced digging power and speed; platforms get a stable, continuous flow for precise fluid fine work.

Climate-Controlled Cab

Advanced AC/heating & fresh air systems maintain optimal spring-like temperatures year-round.

Smart Parking Solution

Seamless blend of auto & manual modes for easy maneuvering, especially in complex environments.

Innovative Strength & Durability

Blending innovation with proven technology, each telehandler boasts a sturdy body and arm crafted from high-strength steel ensuring stability and longevity. Unique slider design with self-lubricating materials and dust-proof features enhances performance under challenging conditions.

Rigorous Testing

Comprehensive load endurance tests on key components validate quality and reliability throughout the product lifecycle, ensuring optimal performance for users.

Precision Torque Sensing

Millisecond response monitors load changes, instantly cuts off unsafe ops for risk prevention.

Dual-Circuit Brakes

Electronically controlled, dual backup design ensures reliable braking even in extreme conditions.

Reinforced Cab

ROPS & FOPS certified, with thick structure top plate, & optional front grille for 360° protection.

Smart Safety Features

Oil cylinder protection valve, image-assisted system with reversing aids & obstacle alerts minimize blind spots, boosting safety & efficiency.

Two-Wheel Steering on the Front Axle

specially designed for high speed road and daily driving, ensuring stable straight line driving and efficient passability.

Unique Crab Walking Mode

Achieve precise left and right positioning, and ensure stable control even when close to walls or obstacles, ensuring operating accuracy and efficiency.

Extended Equipment Life

The automatic leveling function reduces additional wear and tear on equipment caused by load imbalance thereby reducing maintenance costs and effectively extending the service life of equipment.

Four-Wheel Steering on the Front and Rear Axles

It shows extraordinary strength in a small space. By greatly reducing the turning radius it can flexibly avoid obstacles and ensure safe and worry free operations.

Standard Cutting-Edge Technology

WSC1840 comes standard with an automatic leveling function, which monitors and automatically adjusts the posture of the equipment in real time to ensure that the load always remains horizontal during the luffing process, effectively preventing material spillage and safety accidents.





Multi-Control Joystick

One joystick allows the operator to manage travel direction, lift and tilt functions, as well as boom extension, all with a single joystick. This capability enables precise load lifting and facilitates the simultaneous use of multiple machine functions from a single control point. Operators can achieve greater precision and productivity without needing to remove their hand from the joystick. Additionally, the fingertip control access makes operating the telehandler both easy and comfortable.



Air Suspension Seat

The air suspension seat isolates the direct conduction of force waves, effectively reducing the vibration and impact generated by the telehandler during driving. The driver can adjust the airbag pressure in the seat according to his own needs to achieve the best vibration reduction balance point, thereby providing excellent smoothness. The air suspension seat can also be adjusted individually, allowing the driver to adjust the seat state according to personal preferences and driving conditions.



Interactive Display

Designed for the working needs of telehandlers, it integrates a Bluetooth radio, microphone and speaker to provide comprehensive and immediate operating information. When you operate the telehandler to reverse, the display automatically displays the real-time image of the rear camera. This design greatly expands your field of vision, especially in environments with limited vision or low light, and can help you clearly observe the road conditions behind, ensuring the driver's safety and worry-free during driving.



360° Visibility

The all-glass cab design provides the driver with unparalleled 360° panoramic visibility. The all-glass material not only ensures a wide and clear field of vision, but also greatly enhances the indoor light brightness, allowing the driver to easily see the surrounding situation in any operating environment. Whether carrying out precise cargo handling or shuttling through complex and ever-changing work sites, this design can significantly improve the driver's reaction speed and operational accuracy, thereby ensuring efficient and safe operations.



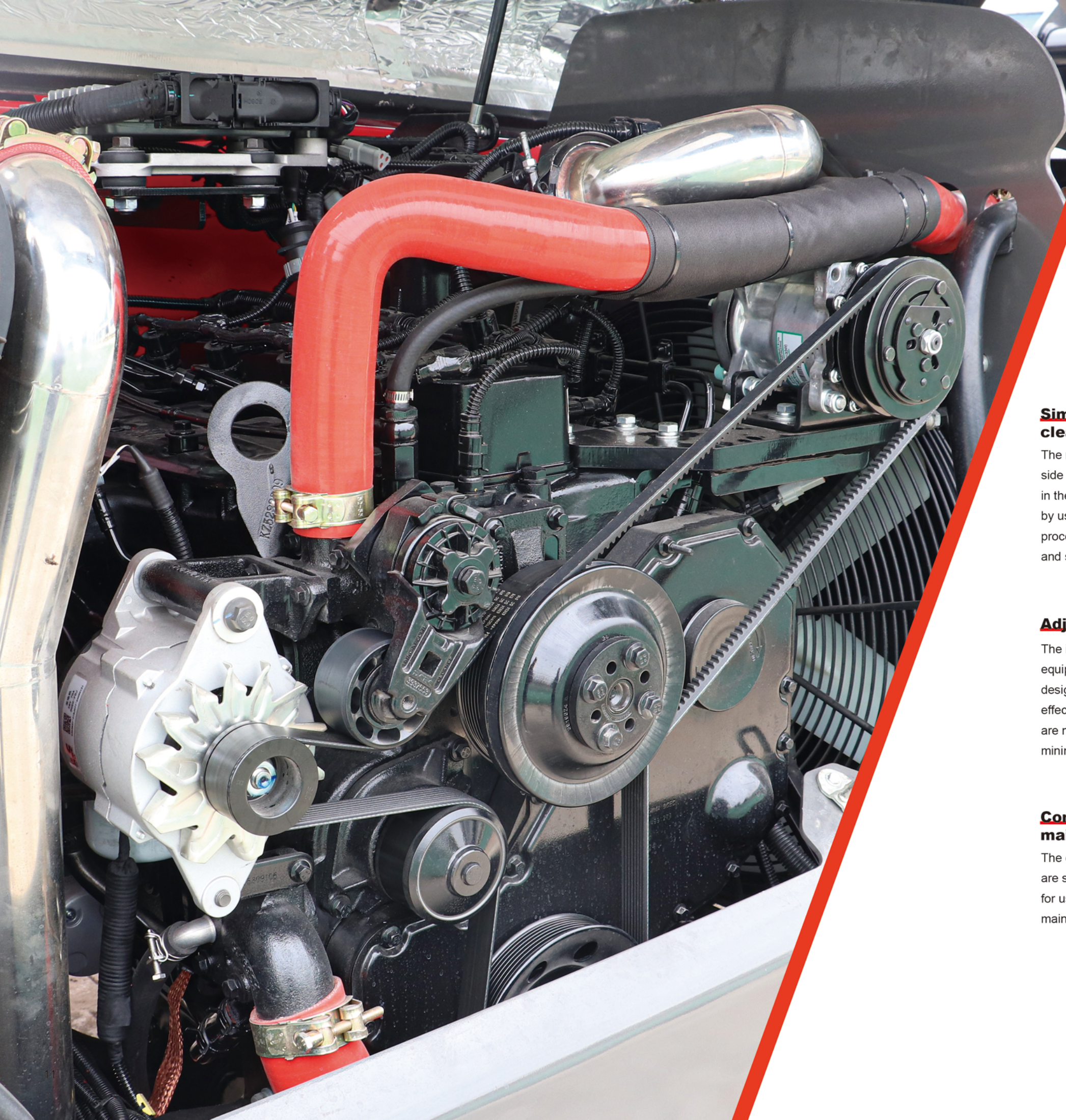
Efficient Air Conditioning

The cab is equipped with a negative pressure/fresh air circulation system and efficient heating and cooling air conditioning to relieve your fatigue during operation. The air conditioning unit is integrated into the machine, without bulky additional devices to block your sight or hinder your walking. It can provide greater comfort in any weather conditions.

Led Lights

LED work lights are thoughtfully positioned on the machine, featuring lights on the front, rear, and the back frame of the cab, ensuring that you have the illumination required to work efficiently in low-light environments or to extend your workday into the evening hours.

VANSE TELEHANDLER ENGINE



Simple cooling system cleanout

The radiator, oil cooler, and fan are installed side by side, creating a well-organized space in the engine compartment for easy access by users. When cleaning is needed, the process of removing dirt and debris is quick and straightforward.

Adjustable boom guides

The inner corners of the telescopic boom are equipped with wear-resistant nylon pads, designed to provide better guidance and effectively reduce boom sway. These guides are not only easy to adjust but also require minimal maintenance and lubrication.

Convenient oil filter maintenance design

The oil filter and other maintenance points are strategically located to allow easy access for users to perform simple and quick maintenance tasks.

Dual-stage air filtration system

Given the versatility of this machine, ensuring continuous uptime is crucial, and it starts with the dual-stage air filtration system.

Service analysis feature

With this feature, your dealer can easily download machine performance data, including faults, warning codes, and other information, to a laptop for quick diagnosis and repair of machine issues.

Engine-easy access design

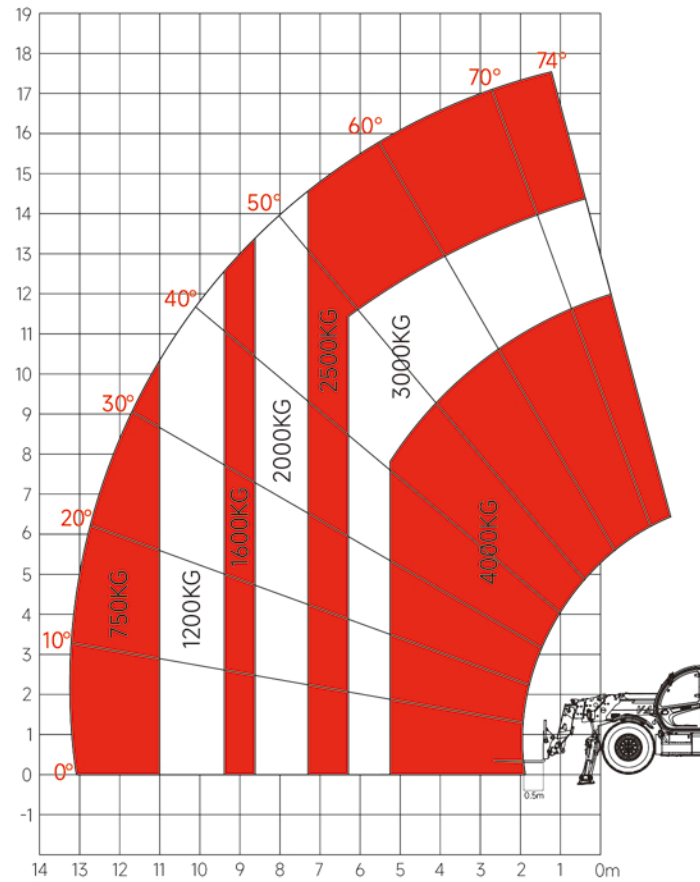
The side-mounted engine design makes routine maintenance checks, filter replacements, and inspections of other engine components within easy reach.

01 WSC 1840

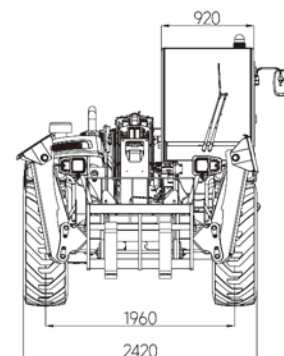
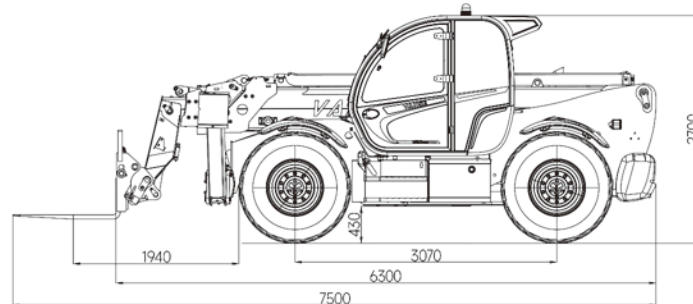
TELEHANDLER



Load diagram



Data diagram



Data sheet

| Capability | |
|-----------------------------------|------------------------------|
| Max Capacity | 4000kg |
| Max Lifting Height | 17.6m |
| Max Outreach | 13.1m |
| Breakout Force with Bucket | 7500daN |
| Lift Capacity at Maximum height | 2500kg |
| Lift Capacity at Maximum reach | 700kg |
| Dimension | |
| Overall Length to Carriage | 6.3m |
| Overall Width | 2.42m |
| Overall Height | 2.7m |
| Wheelbase | 3.07m |
| Front Track | 1.96m |
| Ground Clearance | 0.43m |
| Tilt Angle | ±9° |
| External Turning Radius | 4.2m |
| Tires Type | 440/80R24 |
| Overall Cab Width | 0.98m |
| Performance | |
| Lifting | 7.5s - 17.5s |
| Lowering | 13.5s - 23.5s |
| Extension | 12.5s - 22.5s |
| Retraction | 8s - 18s |
| Crowd | 5.5s - 24.8s |
| Dump | 7.3s - 17.2s |
| Engine | |
| Engine Brand | Cummins Perkins |
| Engine Model | QSB3.9-C110 904J-E36TA |
| Capacity of Cylinders | 3.9L 3.62L |
| Cooling Method | Water Cooling Water Cooling |
| Max Power | 81kw/2200r 74.4kw/2400r |
| Max Torque | 480Nm 430Nm |
| Traction Force | 87KN - |
| Transmission | |
| Travel Speed | 0-30 |
| Gradeability | 65% |
| Steering Model | 4WD/4WS |
| Number of Gears (forward/reverse) | 2/2 |
| Parking Brake | Automatic parking |
| Service Brake | Wet Brake |
| Hydraulics | |
| Hydraulic Pump Type | Load Sensing Variable System |
| Hydraulic Low Pressure | 275bar |
| Tank Capacities | |
| Fuel Tank | 140L |
| Hydraulic Oil | 180L |
| Fork | |
| Forks Length/ Width/ Section | 1200x150x50mm |
| Tilt-Up Angle | 16° |
| Tilt-Down Angle | 117° |
| Weight | |
| Machine Weight (with forks) | 12600kg |

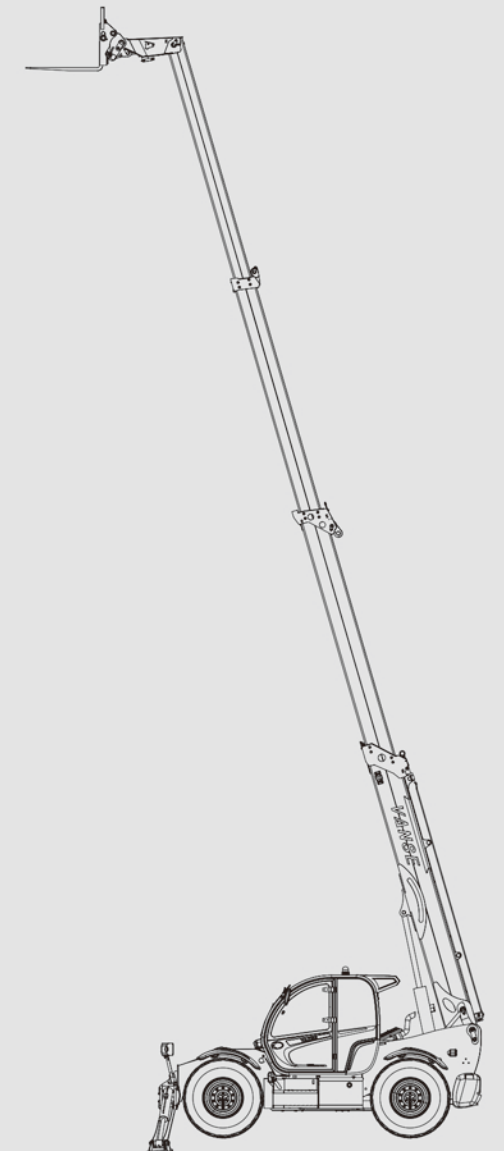
17.6M

MAX LIFTING HEIGHT

4000KG

RATED LOAD CAPACITY

Hydraulic system brand: Rexroth
Drive axle: Italy Carraro

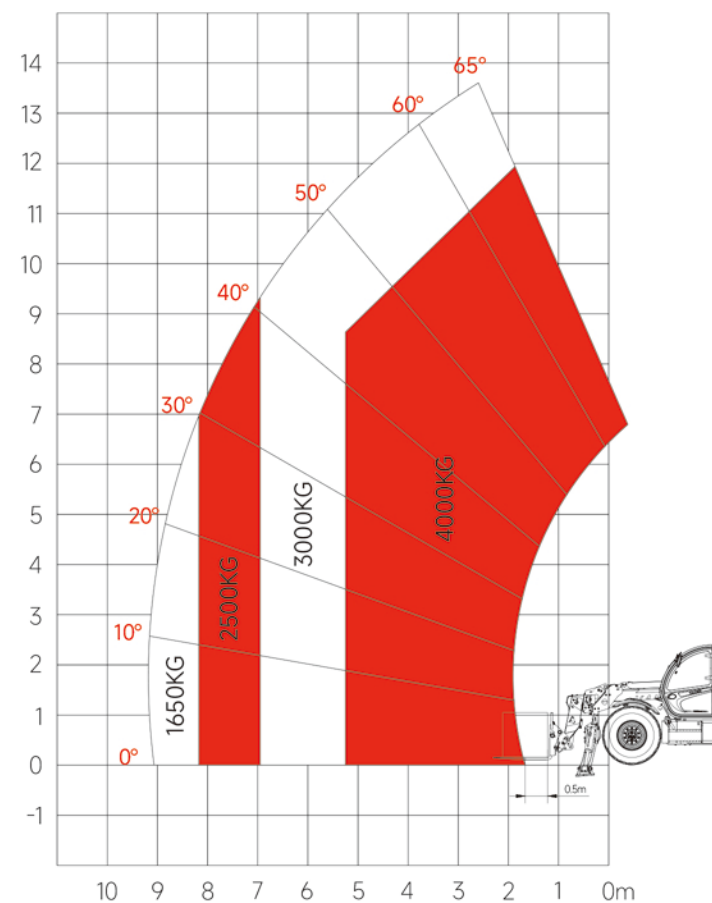


02 WSC 1440

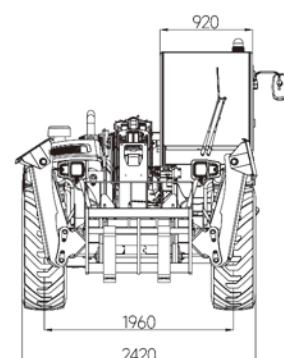
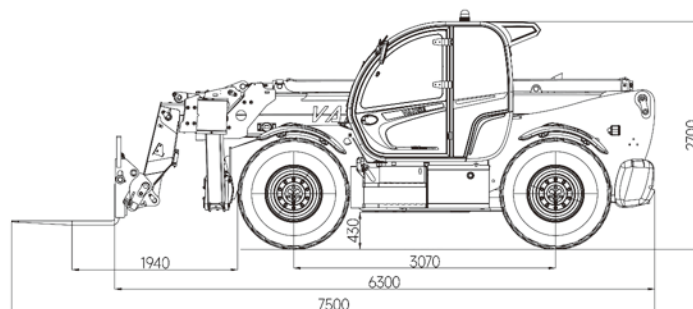
TELEHANDLER



Load diagram



Data diagram



Data sheet

| Capability | |
|-----------------------------------|------------------------------|
| Max Capacity | 4000kg |
| Max Lifting Height | 13.5m |
| Max Outreach | 9.5m |
| Breakout Force with Bucket | 7500daN |
| Lift Capacity at Maximum height | 3000kg |
| Lift Capacity at Maximum reach | 1650kg |
| Dimension | |
| Overall Length to Carriage | 6.3m |
| Overall Width | 2.42m |
| Overall Height | 2.7m |
| Wheelbase | 3.07m |
| Front Track | 1.96m |
| Ground Clearance | 0.43 m |
| Tilt Angle | ±9° |
| External Turning Radius | 4.2m |
| Tires Type | 440/80R24 |
| Overall Cab Width | 0.98m |
| Performance | |
| Lifting | 11s - 17.5s |
| Lowering | 16s - 23.5s |
| Extension | 15s - 22.5s |
| Retraction | 11s - 18s |
| Crowd | 5.2s - 24.3s |
| Dump | 5s - 24.8s |
| Engine | |
| Engine Brand | Cummins Perkins |
| Engine Model | QSB3.9-C110 904J-E36TA |
| Capacity of Cylinders | 3.9L 3.62L |
| Cooling Method | Water Cooling Water Cooling |
| Max Power | 81kw/2400r 74.4kw/2400r |
| Max Torque | 480Nm 430Nm |
| Traction Force | 87KN - |
| Transmission | |
| Travel Speed | 0-30 |
| Gradeability | 65% |
| Steering Model | 4WD/4WS |
| Number of Gears (forward/reverse) | 2/2 |
| Parking Brake | Automatic parking |
| Service Brake | Wet Brake |
| Hydraulics | |
| Hydraulic Pump Type | Load Sensing Variable System |
| Hydraulic Low Pressure | 275 bar |
| Tank Capacities | |
| Fuel Tank | 140 L |
| Hydraulic Oil | 180 L |
| Fork | |
| Forks Length/ Width/ Section | 1200x150x50 mm |
| Tilt-Up Angle | 16° |
| Tilt-Down Angle | 117° |
| Weight | |
| Machine Weight (with forks) | 10800kg |

13.5M

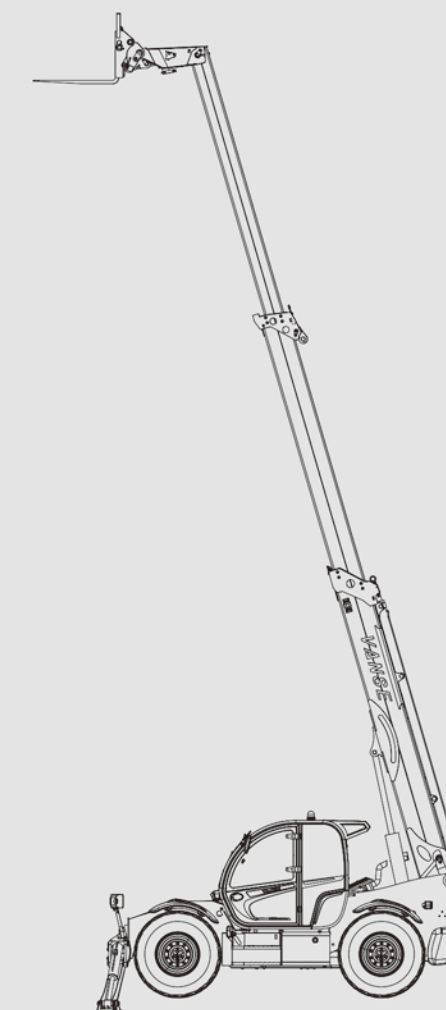
MAX LIFTING HEIGHT

4000KG

RATED LOAD CAPACITY

Hydraulic system brand: Rexroth

Drive axle: Italy Carraro

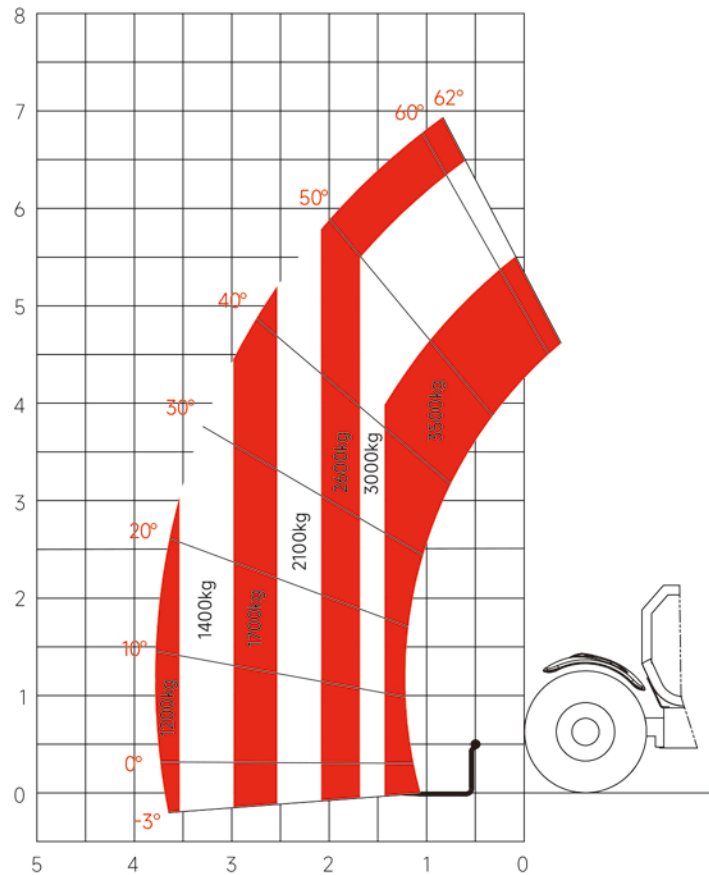


03 WSC 735

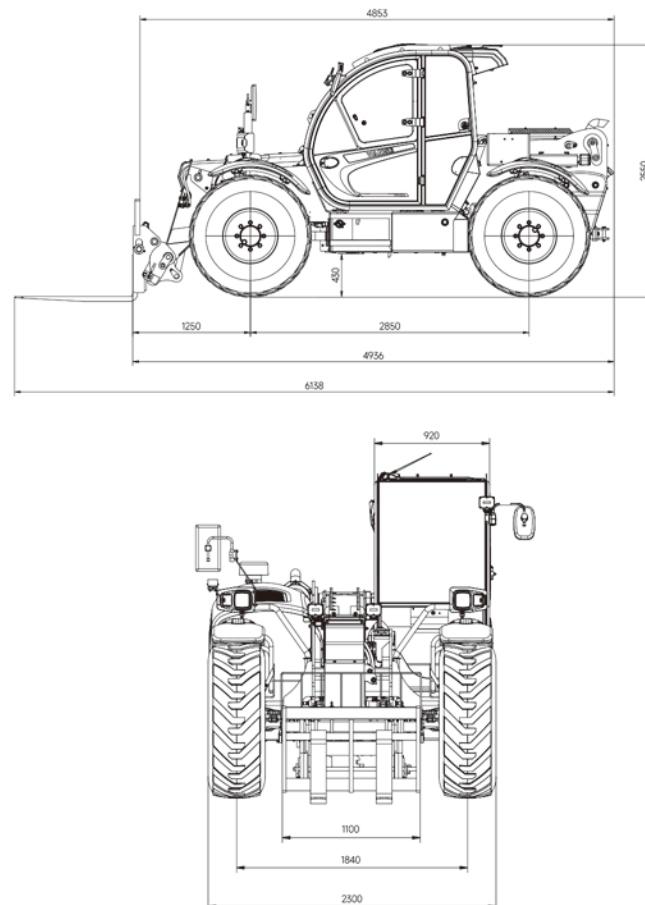
TELEHANDLER



Load diagram



Data diagram



Data sheet

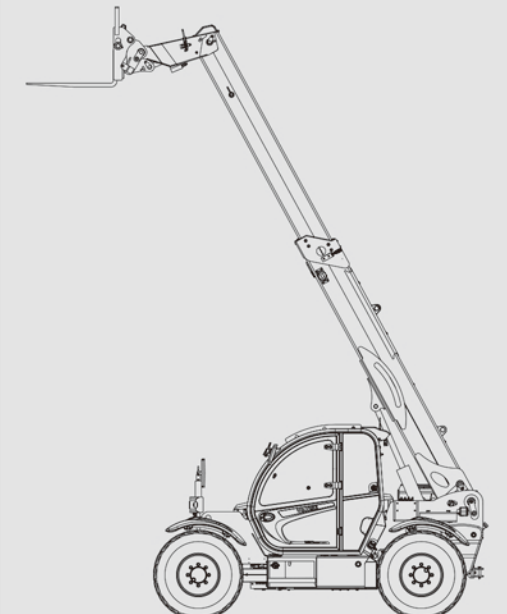
| Dimension | |
|----------------------------------|---------------------------------------|
| Overall length | 4936mm |
| Overall width | 2300mm |
| Overall height | 2550mm |
| Wheelbase | 2850mm |
| Front track | 1840mm |
| Minimum ground clearance | 430mm |
| Tire | 460/70R24 |
| Performance | |
| Rated load | 3500KG |
| Machine weight | 7710KG |
| Maximum lifting height | 7m |
| Maximum outreach | 3.8m |
| Minimum turning radius | 3.9m |
| Maximum theoretical gradeability | 46% |
| Drive form | Four-wheel drive, four-wheel steering |
| Maximum travel speed | 40km/h |
| Main boom rising time | 8.2s |
| Main boom lowering time | 6.4s |
| Telescopic arm extension time | 8s |
| Telescopic arm retraction time | 5s |
| Engine | |
| Power source | YC4DK100-T304 |
| Rated Power | 73kw |
| Main configuration | |
| Axles | Dana/Carraro |
| Gear box | Dana/Carraro |
| Closed travel pump | Danfoss |
| Working pump | Danfoss |
| Travel motor | Danfoss |

7M

MAX LIFTING HEIGHT

3500KG

RATED LOAD CAPACITY

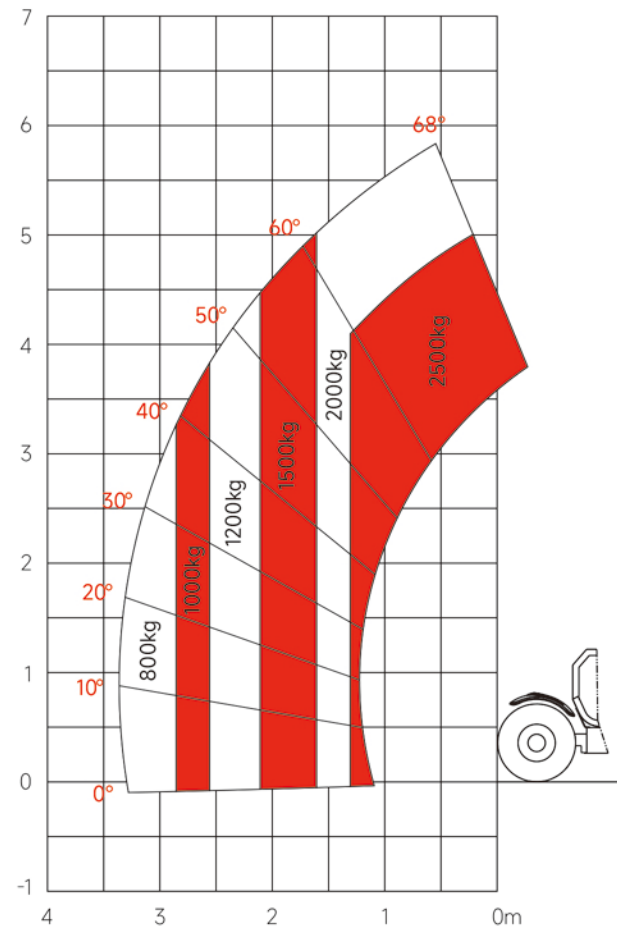


02 WSC 625

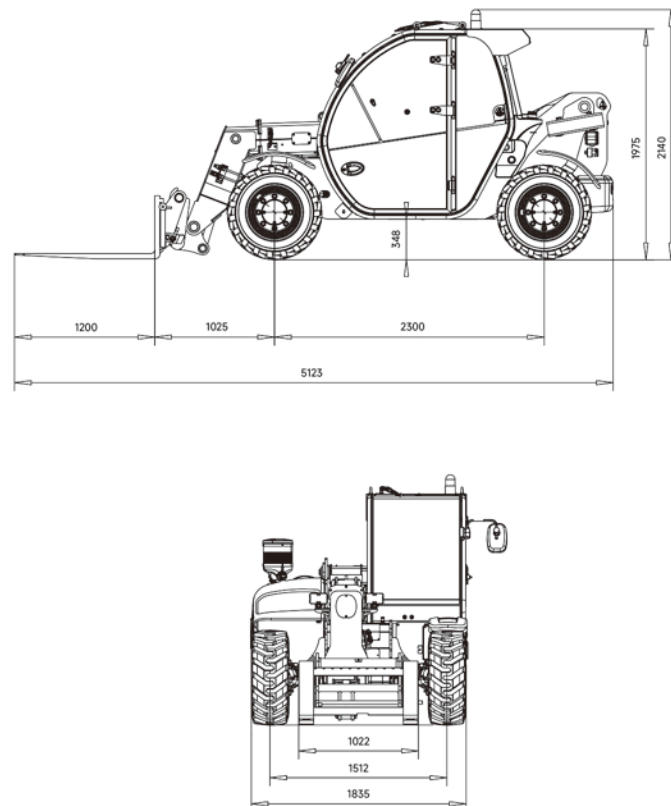
TELEHANDLER



Load diagram



Data diagram



Data sheet

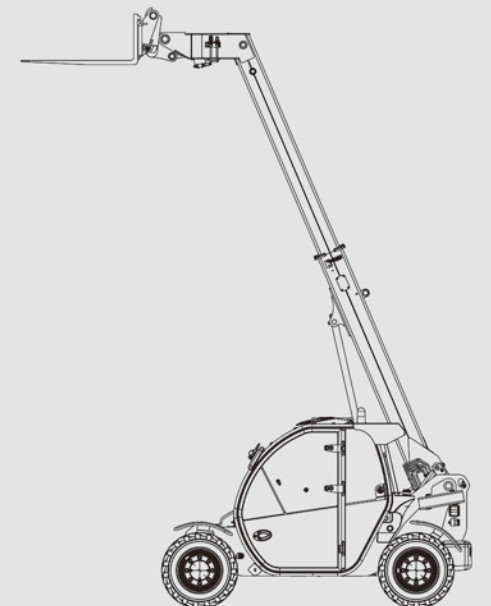
| Dimension | |
|-------------------------------------|---|
| Overall length | 5123mm |
| Overall width | 1835mm |
| Overall height | 2140mm |
| Wheelbase | 2300mm |
| Front track | 1512mm |
| Minimum ground clearance | 348mm |
| Tire | 12-16.5 |
| Performance | |
| Rated load | 2500KG |
| Machine weight | 4900KG |
| Maximum lifting height | 5827mm |
| Maximum outreach | 2190mm |
| Minimum turning radius | 3300mm |
| Maximum horizontal lifting capacity | 800kg |
| Diesel capacity | 58L |
| Hydraulic oil volume | 95L |
| Drive form | 2-wheel steering/4-wheel steering/Crab steering |
| Maximum travel speed | 25km/h |
| Telescopic arm extension time | 7s |
| Telescopic arm retraction time | 4.5s |
| Main boom rising time | 8s |
| Main boom lowering time | 6.5s |
| Engine | |
| Power source | V3307-DI-T-EU02 |
| Rated Power | 54.6kw |
| Main configuration | |
| Axles | Transpower |
| Gear box | Transpower |
| Closed travel pump | Danfoss |
| Working pump | Danfoss |
| Travel motor | Danfoss |

5.8M

MAX LIFTING HEIGHT

2500KG

RATED LOAD CAPACITY



ATTACHMENTS

The VANSE telehandler offers a wide range of attachments to cater to various work requirements and application scenarios.



mixed fodder clip



Extended boom with winch



Snow Shovel



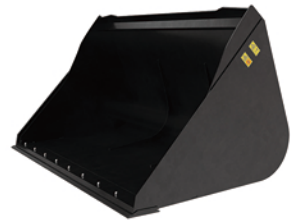
Basket work platform



Brick Clamp



Snow Thrower



Light-Duty Material Bucket



Multi-Functional Agricultural Loader Bucket



Construction bucket



Cement Mixer Bucket



Single hook



Forward-Sweeping Road Sweeper